

Twickenham & Richmond TRIBUNE

Contents

- TickerTape
- COVID-19
- What are we reading?
- Another Four Years
- Letters
- Community Events
- Twickers Foodie
- Review
- WIZ Tales - Netherlands
- Primary Steps
- E-scooters could spark rise in house fires
- Urgent and Emergency Care plan
- £1.3 billion in military support for Ukraine

Contributors

- Simon Fowler
- Lucilius
- (Councillor- still) GEOFFREY SAMUEL
- Alison Jee
- Mark Aspen
- World InfoZone
- St Mary's University
- Royal Ballet School
- Zurich
- Brentford FC
- RFU
- Royal College of Emergency Medicine
- HM Treasury
- WHO
- LBRuT

Editors

Berkley Driscoll
Teresa Read



13th May 2022

T&RT

Friendly Robin, Strawberry Hill
Photo by Berkley Driscoll

TickerTape - News in Brief

Rail disruption in Barnes area this weekend - Saturday 14 and Sunday 15 May

The lines in the Barnes area will be closed all weekend due to maintenance work.

Saturday 14th May

- London Waterloo to Reading services will be revised and will be diverted between Clapham Junction and Twickenham via Kingston. These services will call additionally at Kingston.
- London Waterloo to Windsor services will be revised. These services will be diverted between Clapham Junction and Twickenham via Kingston calling at all stations.
- London Waterloo to Weybridge via Staines services will be revised and will start from Kew Bridge.
- London Waterloo to London Waterloo via Wimbledon and Kingston services will be revised and will run between Kingston and Richmond only.
- London Waterloo to Shepperton services will be revised.
- Buses will run between Clapham Junction and Twickenham, calling at all stations except St Margarets.
- Buses will run between Clapham Junction and Kew Bridge.

Sunday 15th May

- London Waterloo to Reading services will be revised and will be diverted between Clapham Junction and Twickenham via Kingston. These services will call additionally at Wimbledon and Kingston.
- London Waterloo to Windsor services will be revised.
An hourly service will be diverted between Clapham Junction and Twickenham via Kingston calling at all stations.
An hourly service will run between Richmond and Windsor.
- London Waterloo to London Waterloo via Wimbledon and Kingston services will be revised and will run between Kingston and Richmond only.
- London Waterloo to Woking via Staines services will start from Kew Bridge.
- The afternoon and evening London Waterloo to Kingston via Hounslow services will not run.
- Buses will run between Clapham Junction and Twickenham, calling at all stations except St Margarets.
- Buses will run between Clapham Junction and Kew Bridge

skyelectrical

Replacing your halogen recessed lights with LEDs will:

- ✓ SAVE ENERGY
- ✓ SAVE YOU MONEY
- ✓ PROVIDE BETTER LIGHTING

So...

- ✓ CALL US TODAY FOR A FREE HOME ASSESSMENT AND QUOTE

For a timed appointment please call Sky Electrical on 020 8894 1799

22 Fifth Cross Road, Twickenham, Middlesex, TW2 5LF

www.skyelectrical.co.uk

020 8894 1799

info@skyelectrical.co.uk



COVID-19

Teresa Read

World Health Organization

Weekly Epidemiological Report 11 May 2022

Globally, the number of new COVID-19 cases and deaths has continued to decline since the end of March 2022.

During the week of 2 through 8 May 2022, over 3.5 million cases and over 12 000 deaths were reported, decreases of 12% and 25% respectively, as compared to the previous week. However, an increase in the number of new weekly cases was reported from the Region of the Americas (+14%) and the African Region (+12%) and an increase in the number of weekly deaths was reported from the African Region (+84%).

As of 8 May 2022, over 514 million confirmed cases and over six million deaths have been reported globally.

Total cases Locally recorded 10 May 22

Richmond upon Thames	66,486
Kingston upon Thames	59,862
Hounslow	94,638
Wandsworth	116,711

COVID IN THE NEWS

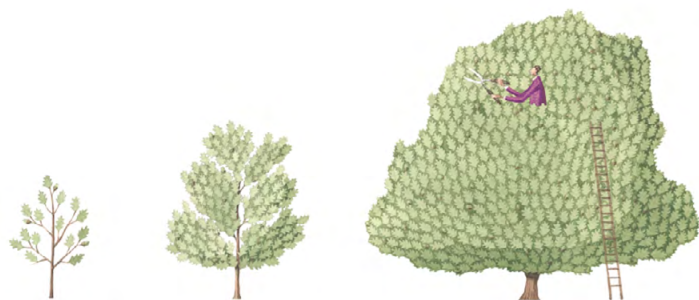
The Guardian 13 May 2022: Trump officials and meat industry blocked life-saving Covid controls, investigation finds

USNews.com 13 May 2022: N. Korea Gets Offers of Aid to Fight COVID as it Lacks Vaccines

Metro US 12 May 2022: China reports 2,532 new COVID cases on May 12 vs 1,917 a day earlier

Sky News 12 May 2022: COVID-19 Biden marks 'tragic milestone' as US hits one million virus-related deaths

Nature 11 May 2022: Coronavirus 'ghosts' found lingering in the gut: Scientists are studying whether long COVID could be linked to viral fragments found in the body months after initial infection.



The Tree Agency

darryl parkin

The Treehouse
25 King Edwards Grove
Teddington, Middlesex TW11 9LY
Telephone 020 8274 0107
Mobile 07960 123580
Fax 020 8274 0119
info@thetreeagency.co.uk
www.thetreeagency.co.uk



The Tree Agency

What are we reading?

By Simon Fowler

Richmond-upon-Thames has one of the oldest public library services in Britain. The Richmond Free Library was established in 1881 while Twickenham's was formed a year later. Each library was funded by a voluntary penny increase in the rates, which was barely enough to provide a basic service. To an extent the finances were ameliorated by gifts made by the wealthier residents both financially and by the contribution of books and newspapers. From the annual reports published by the libraries in the 1880s it is clear that many of the donations were either worthy but unreadable or had been discarded by the donors for good reasons. Supporters also supplied a wide range of newspapers and journals with the occasional sporting paper hidden among the respectable theological and literary periodicals.

Both libraries were immediate successes. By the end of 1882 Richmond's librarian reported that one in six of the town's adult population had joined. It would have been much the same across the river.

There were attempts to ascertain the occupations of subscribers. Most came from the lower middle-class and upper working-class who were literate but could not afford to buy books, which were then very expensive.

Then (as now) the most books borrowed were fiction. In Richmond the most popular book borrowed in the first year was Mrs Braddon's *Lady Audrey's Secret*, described by one critic as being 'the most sensationally successful of all the sensation novels.' Thereafter such details were omitted from future reports. One can perhaps see why. Incidentally Mary Braddon lived in Richmond.



The committees overseeing the libraries were concerned that subscribers would get drunk and cause trouble in the reading rooms. Members behaved immaculately on the premises with no more than half a dozen books lost or damaged each year.

The service in Twickenham was established in two rooms in the Town Hall in King Street, although it originated in a small private library which had been set up in the 1840s but had become moribund. With the help of a grant from the great American industrialist Andrew Carnegie a splendid new building opened in Garfield Road in 1906.

Richmond took a different approach. Here the Vestry obtained a government loan to acquire a site on Little Green and erect a purpose-built library. Sited next to Richmond Theatre the original library is still in use.

The Whitehall official who inspected the site, Major Tulloch, was very critical of the proposal. He thought that music from neighbouring churches might disturb readers. More seriously the site was very small, which precluded any extension, as indeed soon proved to be the case. More seriously the building was very poorly built which has caused considerable problems over the decades.

The library service still remains immensely popular with branches across the borough.

Giacomo Puccini
Suor Angelica
Nikolai Rimsky-Korsakov
Mozart and Salieri



Painting by Kume Bryant: Cross No 2

Featuring Rose Opera Orchestra, Soloists and Young Artists
Performed in the original languages with english surtitles

May 27th 2022 - 20:00 May 28th 2022 - 19:00 May 29th 2022 - 14:30

The Normansfield Theatre

The Langdon Down Centre, Teddington, 2A Langdon Park TW11 9PS, UK

Book tickets now: 0333 121 2300 www.roseopera.co.uk

rose
opera

Another Four Years

(Councillor- still) GEOFFREY SAMUEL

I am pleased that my re-election will enable me to continue the service to the community which was so important a part of my parents' life. The family record really matters to me.

During the war my Father was the senior GIO for the Borough of Twickenham. Who now knows what "GIO" stands for? In the late 1930s the Government feared that in a future war the Germans might deploy poison gas in civilian areas as had been used occasionally in the trenches in 1914- 18. In every council area they trained one or two people, often with a science background, to be able to "identify" the actual gas so that the correct antidote could be applied. He was called out in full gear just twice – both, of course, false alarms. Otherwise he worked full-time for Shell and devoted all night every three nights to the Wardens Post where he was an Air Raid Warden.

My Mother was an active volunteer for Lest We Forget, a charity devoted to disabled ex service men and women and to the League of Friends for the then South Middlesex Isolation Hospital. She was still involved when I was first elected to Twickenham Council in 1957 as a Labour Councillor. I resigned from the Party in 1979 after retiring as a Councillor in 1978 as it was becoming difficult to combine Group leadership with the large Hounslow Comprehensive School where I was Headmaster. Like most Councillors until recently I was a School Governor and Chairman at Orleans Park for many years. I was appointed to the Richmond Bench in 1978, retiring, as deputy Chairman in 2001.

Elected in a by-election in 1997 by gaining a seat for the Conservatives, whom I had joined in 1992, I was Deputy Leader when we controlled the Council from 2002-6 and 2010-18, successively responsible first for Schools and then the Budget.

Let's be honest! I am not going to win many votes in Council or Committee meetings. That matters less to me than in my younger days when the political aspect of the work mattered so much. Now my overriding priority is support and involvement with local residents. And so it shall continue. However, I do have two missions for the next four years which will, I hope, attract support.

We need actively to uphold the tenets of democracy. Last year in a flourishing democracy millions of people were persuaded to reject a patently fair election as "stolen" and to be rejected, in the end by totally unacceptable means. In our country millions rejected Brexit, which is reasonable and legitimate, but it is a different matter to reject the result of a referendum. Locally the Council consulted residents on 20mph and Burtons Road, ignored the result and did the opposite. I shall be vigorous in opposition if that continues to happen.

I shall continue Kate's and my campaign to ensure that the cost of measures and policies to combat climate change does not fall disproportionately on the less well-off. We have reasons to be wary. The Council has relieved recipients of benefits from even the smallest contribution to Council Tax. Fine. But the cost of this relief is paid out of Council Tax which is a far bigger proportion of disposable income for the less well-off than for the wealthy. And a £60 penalty for driving along Burtons Road is a bigger proportion of income for those on £25,000 year than for those of £100,000. All indirect taxes are regressive and we must be reluctant to increase their use. I shall oppose any Climate change proposal that hits the poor hardest.

On winning my by-election in 1997 I publicly promised "I will not let you down". Every day I try to honour that pledge.

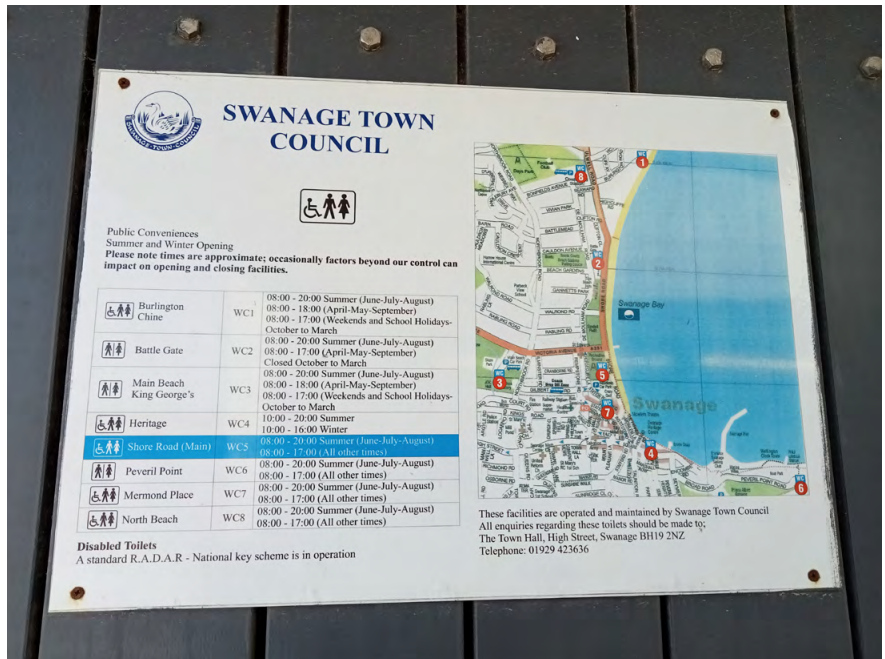
Dear Editor,

If only!

On a recent visit to Swanage, a small town on the Dorset coast boasting eight fully functional and spotlessly clean public toilets.

Yours faithfully,

Name and address supplied
Teddington



Dear Tribune,

Twickenham Riverside development.

From 6 January 2021 until 3 February 2021, Richmond Council ran a consultation asking residents about their views on the proposals for the Twickenham Riverside development.

Apparently, 829 people responded.

Of those 829 people, 73% agreed that: *'the proposed development achieves the ambition of high-quality open space and pedestrianised priority'*.

Maybe it does, but 73% of 829 people is only 605 people.

The population of Richmond is about 196,000, meaning that 605 people is 0.3 %. Cllr Gareth Roberts, Leader of Richmond Council, was reported as saying:

*"Local residents like this scheme and they want to see it delivered. If the Tories think their path back to power in Twickenham will be by opposing public investment in this key site to create a beautiful riverside destination, and in doing so block **the first scheme ever that has had broad public support**, then they will find themselves losing at the next and subsequent local elections, and deservedly so."*

I am puzzled as to how the Liberal Democrat Council can regard 0.3% of the population as 'broad public support'.

That's even less than in the Ultra Low Emission Zone survey (19%) or the 20 mph speed limit survey (5%).

What's next to be 'broadly supported'? Something that 0% vote for?

I can offer no views on the actual development because, like the other 99.7%, I was never consulted. Not much liberal or democratic around here!

Michael Jay
Twickenham

Vibrant, Flourishing Democracy

By Lucilius

London Borough of Richmond upon Thames Council Opposition before 5th May 2022



London Borough of Richmond upon Thames Council Opposition after 5th May 2022



Images by Violet Mills and Julia David

Kew the Music returns for 2022

With iconic names in a spectacular settings, Kew the Music is back this July with an amazing line up.

This summer will see artists such as Van Morrison, James Blunt, DJ Spooky, Will Young, James Morrison and Bananarama all take to the stage at the stunning surroundings of Kew Gardens for a number of special summer evening performances.

Relax and enjoy a summer BBQ or a gourmet picnic hamper with one of the exclusive food and drink packages also available at each event.

Tickets are selling fast so [book yours today](#).



Ham Open Gardens returns

Once every two years, residents have a unique opportunity to go 'behind the garden wall' of a selection of the most beautiful private gardens in Ham.

Ham Open Gardens will take visitors on a fascinating journey through a variety of gardens which reflect the diversity of the area's rich history, from the 17th century through to the present day.

Among more than twenty gardens on display are traditional large gardens belonging to grand Georgian lodges (such as Ormeley Lodge and Sudbrook Lodge), highly innovative contemporary schemes and charming cottage gardens, as well as the Sanctuary Garden, which was exhibited at the Hampton Court Flower Show.



Guests will be treated to the sounds of the excellent Salamander Saxophone Quartet, who will be situated on Ham Common. In addition there will be a barbecue on nearby South Avenue run by the local Scout group from 12pm, and delicious homemade teas served from 1 to 4.30pm at St Thomas Aquinas Church near the pond on Ham Common.

All of the gardens are within short walking distance of Ham Common, which is easily accessible by public transport (the number 65 bus runs from both Richmond and Kingston to Ham Common every six minutes). Tickets are £10 in advance or £15 on the day (free for under 16s) and can be bought in advance or on the day from a stall on Ham Common.

This year Ham and Petersham SOS are one of the local charities that will benefit from the funds raised on the day.

Authentic French Market



Twickenham **CHURCH STREET**
Sunday 15th May 10am - 4pm
Monday 16th May 9am - 5pm

FRANCE AT HOME
www.franceathome.com
fahmarkets@gmail.com

In association with the
Church Street Association

FOLLOW US ON 



The annual Richmond Volunteer Fair returns

The Richmond Volunteer Service is delighted to invite all residents to meet a wide range of local organisations and join 'Team Richmond'.



The annual Volunteer Fair returns to an in-person event this year and will offer the opportunity to talk to some of the amazing groups that support and enrich our local communities.

Whether you have a few hours to fill and would like to help others, or are looking for a new challenge, the borough has hundreds of charities and groups where you could make a difference.

The stallholders will include groups working in the areas of sport, health, culture, children and young people, neighbourhood support and more – all with interesting and, sometimes, surprising roles you could get involved with. They will be ready and waiting to provide ideas, information and inspiration for new volunteering experiences.

It's free to visit and will take place on Thursday 26 May 2022, from 2 to 6pm, at Richmond and Hillcroft Adult and Community College. For more information and to book tickets, visit the [Richmond's Volunteer Fair 2022 Eventbrite page](#). Advance registration is essential.

If you're looking to volunteer with a local organisation, [register for your place now](#).

This event is organised by [Richmond CVS](#), who run the Richmond Volunteer Service. The service helps to promote local volunteer opportunities and volunteer recruitment in the borough of Richmond upon Thames.



COMMUNITY EVENTS LEADING UP TO THE FORMATION OF THE TWICKENHAM & RICHMOND TRIBUNE

TWICKENHAM ALIVE COMMUNITY EVENTS - PART 1 OF 6: 2011

Teresa Read

The re-creation of the Charlie Shore Regatta for Boys and Girls, an annual Twickenham event from 1894 to the 1950s, was our first event on 17th and 18th September 2011 (*photos from the two day event shown below*).

Twickenham Alive was formed to organize events surrounding the regatta and Berkley Driscoll and I were given a Volunteer's Contract by the London Borough of Richmond upon Thames.

The Regatta was part of a two-day event on Twickenham Riverside organised by Twickenham Alive with the RFU and the Richmond Environmental Information Centre. The event included Stand Up Paddleboard races (the first time SUP came to Twickenham Riverside), a two-day market on The Embankment, music stage on Champions Wharf, a children's fairground and Shetland pony rides. Twickenham Rowing Club was paid to organize the rowing races and a special Charlie Shore dance was also commissioned for the event.



Not forgetting my teaching background, we arranged a video and photographic competition at the Charlie Shore Regatta for Richmond College students and local residents. A photographic exhibition, video screenings and prize-giving took place in Clarendon Hall with the audience voting for the best video.

A list of events on Twickenham Riverside organized by Twickenham Alive can be seen in this edition of the [Rugby Post](#)



Pope's Grotto Preservation Trust presents:

The Making of A Virtual Arcadia

An online webinar exploring the story behind our groundbreaking digital reconstruction of Alexander Pope's lost garden at Twickenham

Professor Paul Richens will speak about the background to the project and the use of maps of the area, the research into neighbouring buildings, the villa and gardens. The audience will be invited to submit questions. Ticket holders will be granted exclusive access to a 27 minute high-quality video recording of a tour of the reconstructed garden for viewing before the event.

The event will be chaired by Professor Judith Hawley.



7:00 to 8:00 pm, Wednesday 22nd June 2022

Tickets: £5

Book at: ticketsource.co.uk/popesgrotto



ENGLISH
HERITAGE


Pope's Grotto
PRESERVATION TRUST



HERITAGE
FUND



Supported using public funding by
**ARTS COUNCIL
ENGLAND**

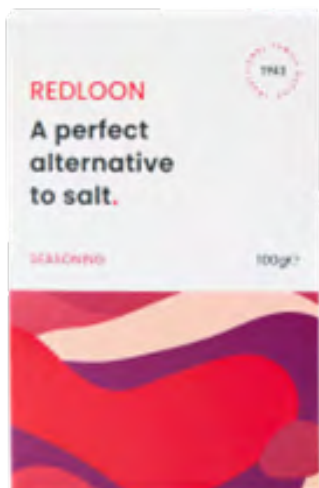
MAY FOOD AND DRINK NEWS

I've found some fabulous new products this month for you to try:

The first is in fact a range of great new meal kits from **Grace Foods**, the leading UK Caribbean food and drink producer, also behind those yummy Encona sauces.

The Jamaican-inspired **Irie Eats** authentic street food range features five different traditional Caribbean meals, from Caribbean Curry to Spicy Jerk Wrap kits with varying degrees of spiciness, (don't worry, they're clearly marked on the pack!) plus a side dish of Rice & Peas. Easy to make in under 25 minutes, they

include authentic ingredients such as jerk seasoning sourced from trusted Jamaican growers. You just need to add protein or veg, so they are great for vegetarians and vegans too. The kits are £3.50 each (serving two or four) with the Rice & Peas sachet costing £1.75. The Irie Eats range is available in Tesco stores nationally.



And while on the subject of seasonings, if you want to add a touch of spice to your kitchen repertoire, **RedLoon Seasoning** and **RedLoon Spicirub** are definitely worth trying. Loon is the Punjabi word for salt, and the seasoning is definitely 'salt with benefits'. I'm using it in so many different ways - sprinkled onto scrambled eggs, a topping for hummus, added to salad dressings and it's amazing for using when roasting veg. The Spicirub is a concoction of tasty, aromatic spices for conjuring up a great marinade. Just mix with a little oil and fresh lemon juice and use as a rub one hour before cooking for maximum flavour - it'll be great for the BBQ season. These are both available (sadly online only at the moment but I'm sure soon to reach main retailers) and great value at under £3 a pack. They're Vegan and Vegetarian Society approved and available [online](#)

Are you, like me, discovering the delicious benefits of kombucha, switchel and coconut kefir? If so, **Remedy Drinks** is your answer. Kombucha is fermented tea and involves natural fermentation of sweet tea, healthy bacteria and yeasts. It's a tasty drink with sweet and sour flavours containing healthy, living cultures and organic acids. Switchel is a drink made of water mixed with vinegar, and often seasoned with ginger. Coconut kefir's a nourishing, dairy-free fermented beverage made with coconut milk, date paste and kefir grains, with strong anti-inflammatory, antifungal, anti-bacterial, properties. The Remedy range is low calorie, with a wide range of flavours and comprises all of the above. Available in Tesco, M&S, Holland & Barrett, Amazon and Ocado from around £1.99 for a 250ml can.





Looking for an alcoholic drink that's also unusual and quite delicious? Love those Margaritas? Then try the **Pimentae** margaritas. Created in 2021 during lockdown, Pimentae is a ready made cocktail - to enjoy straight away with friends, hassle free. The product which introduced me to Pimentae is **Tommy's Chilli Margarita**, (often known as a Picante). It's tequila, lime, agave, and chilli poured over ice, a fiery twist on the classic Margarita and a balance of sweet and spicy. The latest introduction is **Cucumber & Elderflower Eclipse**, with

cucumber, mint and elderflower flavour notes. My favourite is Tommy's, but you should try both to discover your own preference. Available from [Pimentae Drinks](#) ABV 15%, 50cl, £29.95. The label design is rather spectacular too, and if you're lucky you might spot Pimentae at some of the summer festivals this year.

For enjoying with the above, (or any other drink of course), try the delicious (but I do have to say, rather pricey) **Seed Snacks from Pep & Lekker**. They bring something different to vegan snacks (dominated by fruit and veg crisps, protein balls, flavoured nuts and granola bars) and are a combination of crackers and savoury biscuits. They are very different, incredibly healthy, nutritious and available in five flavours (Rosemary & Hemp is my favourite) at £1.70 a 30g pack from Ocado, Revital and Amazon.



We all know and love those established brands of carbonators, but the one thing they just can't do is put fizz directly into anything but water. Well, help is at hand with the newly launched (in the UK) **Drinkmate** machine. This is the only carbonator **that can add fizz to any drink** – juices, iced teas, wine... you name it, this machine can make it sparkle! It's an ideal choice for experimental cocktail makers.(it lets users carbonate the perfect cocktail - from spritzing up wine to crafting a perfectly carbonated Cosmo). It does everything the other types of carbonators do, plus a lot more. It's great for kids' drinks and for adults too. With Drinkmate's patented CO2 fizz infuser technology, you can add fizz to beverages with a simple press of a button. Available in several colour options including [online](#) - Drinkmate + 1 60L CO2 canister for £99.99 (with free shipping)

FESTIVAL FUN THIS SUMMER

Yes! It looks like we're 'all stations go' for a summer of festival fun. Here are some details of some of the local food festivals that we can look forward to this weekend and in the very near future...

Hampton Court Palace Artisan Festival: 13-15 May

This was a lovely debut festival last year and I'm delighted to see that it's back on [this weekend](#) **May 13-15**. The Hampton Court Palace Artisan Festival brings together the best of gifting, crafts, vintage games and delicious street food in



a delightful setting within the palace's stunning formal gardens, bursting with spring flowers. It offers some unique bespoke businesses, makers and producers, alongside delicious street food. Whether you're looking for unique gifts you won't find on the high street, beautiful home accessories, or want to get creative with craft, there's everything you need and more. Hampton Court Palace admission tickets include free entry to the Artisan Festival, while Historic Royal Palaces members can also enjoy free entry. Click link [here](#) for tickets and info.



Foodies Festival Syon Park: 3-5 June

The hugely-popular Foodies Festival comes again to Syon Park for the Jubilee bank holiday weekend and this year it's even been confirmed as an official Jubilee event. There'll be celebrity chefs, including Atul Kochhar and



Santosh Shah, and a host of MasterChef champions too. There's great live music from headline acts like East 17, Blue and Scouting for Girls too. And with the Royal theme to celebrate the Jubilee, it promises to be a 'street party par excellence' with street food and artisan food and drink stalls, demos from Bake Off finalists, free drinks tastings and much more. Masterclasses in the Drinks Theatre include Cocktail Making through the decades, and Champagne, Beer, Cider and Wine tasting. 'No and Lo' alcohol is predicted to be the UK's biggest drinks trend - join the experts to taste and compare some of the best products on the market. **Special Offer:** I've negotiated a special ticket offer for you - just quote **SYON30**

at checkout for a 30% discount on the ticket price. For tickets and more info visit the link [here](#)



Spirit of Summer - Olympia 23 - 26 June

A 'treat yourself' day out! Reimagined as an exciting pop-up event at the iconic Olympia London. This event showcases the finest accessories in home interiors and beauty & fashion, in addition to some great stalls with artisan food & drink. Discover hundreds of independent brands and boutiques for summer living. The Fair brings together a carefully curated collection of businesses for four days only; championing brands that are British made, ethically minded, and sustainably run. I love going along each year to discover new stalls with fashion, soft furnishings, accessories and delicious delicacies. Also, it's a great chance to catch up with the latest stock from some of my favourite companies that I only seem to find at this fair. There's a champagne bar too but don't drink too much or you might go over the top at the Art & Antiques Fair that's co-located and access is included in the price of your ticket! For opening times and ticket info click [here](#)



Surrey Food Festival: 30-31 July

Another popular festival for locals in SW London is the Surrey Food Festival that takes place at Old Deer Park in Richmond. Lots of live music and street food, plus some demos and a kid's zone. It's early days to confirm the full line up, but it's worth putting a note in the diary. The good news for dog owners is that this year, our canine pals are allowed along to enjoy the fun and music too! For tickets, details of other Local Food Festivals and further info visit the link [here](#)

Animal Farm

By George Orwell, adapted by Robert Icke

CTP and Birmingham Rep at Richmond Theatre, then on tour until 28th May

“Human puppets do something different. They are metaphors for our struggle to live ...” These are the words of Basil Jones, co-founder of Handspring, the company responsible for large-scale puppetry productions like *War Horse*, in which puppeteers develop a collective mind-set, rather like dancers.

It is surprising that it’s not until now that we are seeing a major production of *Animal Farm* in human puppetry form. George Orwell’s *Animal Farm*, is in effect a fairy story, albeit a frightening one, told in the style of Aesop’s fables.

It uses animals on an English farm to tell the history of Soviet communism, which Orwell, unable to turn a blind eye to its cruelties and hypocrisies, heavily criticised.



The story of *Animal Farm* is astutely directed by Robert Icke. The tale is enacted mostly by puppets, designed by Toby Olié, of *War Horse* fame. Beside Napoleon, Snowball (representations of Joseph Stalin and Leon Trotsky respectively) and Squealer, who become more and more human, even standing on two legs, and who come to represent the ‘more equal’ animals on the farm, we have an assortment of other farm animals including fearsome dogs, who represent the secret police.

The communication between the animals is truly remarkable, for instance the tender interaction between Boxer and Clover, a good hearted working mare, is so naturalistic, you quite forget that they are puppets. Also moving is the scene at the end of the production when Clover is experiencing poor eyesight and finds it hard to distinguish the difference between Napoleon and the Farmer.

Although the ‘fable’ is essentially about Communism in the USSR, it has its counterparts in other dictatorial regimes, e.g. Mao Tse-tung, Pol Pot and, almost as if things have turned full circle, Russia and President Putin.

Read Celia Bard’s review at www.markaspen.com/2022/05/11/animal-farm

Photography by Manuel Harlan



WIZ Tales - The Kingdom of the Netherlands

Teresa Read

The Kingdom of the Netherlands is a low-lying country in Western Europe, bordered by Germany, Belgium and the North Sea. Amsterdam is the capital city and an important port; the government of the Netherlands is situated in The Hague.



At one time it was possible to walk between the Netherlands and Britain. However, the levels of the North Sea began to rise at the end of the last Ice Age; 8,000 years ago a tsunami - said to be the biggest tsunami recorded on Earth - changed Britain into an island.

Global warming and climatic change could see sea levels rising dramatically. Low-lying countries such as the Netherlands would be at considerable risk.

A number of well-known explorers have set sail from the Netherlands from early times. Willem Barentsz, a sixteenth century navigator, is immortalized by the naming of the Barents Sea and Abel Tasman was the first European to discover New Zealand (1642) and the islands of Tonga and Fiji (1643).



The Netherlands is also known for its artists. The most well-known early artist is the fifteenth century painter Hieronymus Bosch, whose works include the Adoration of the Magi and The Last Judgement. Other artists are Rembrandt (1606-1669), Vermeer (1632-1675), Van Gogh (1853-1890) and Piet Mondrian (1872-1944).



More information about the Kingdom of the Netherlands:
<https://worldinfozone.com/country.php?country=Netherlands>



Photos courtesy the Netherlands Board of Tourism

Inspiring Women Lecture Series

Do What You Love and Love What You Do

Richmond and Hillcroft Adult Community College, Richmond, TW9 2RE

9 Jun 2022 - 18:00 - 20:00

Sponsored by English Heritage, National Lottery Heritage Fund, and Vist Richmond and hosted at RHACC, these five separate events over June and July are inspired by Henrietta Howard- visionary behind Marble Hill.

These events are by women to inspire your inner entrepreneur. Your ticket includes a glass of wine, networking, and a marketplace promoting local businesses.

Do What You Love and Love What You Do – Join Holly Tucker (Founder, NotontheHighStreet.com and Holly & Co) and Samantha Trinder (Co-Owner, Bingham Riverhouse) for an in-conversation around the joys, challenges and lessons learned when setting up and running your own business.

[BOOK TICKET HERE](#)

Ticket cost £5 donation to support the invaluable work of the White Ribbon charity for those suffering domestic abuse and English Heritage which cares for over 400 locations across the country.

Holly Tucker:

Holly Tucker MBE, founder of notonthehighstreet and Holly & Co, is the UK Ambassador to Creative Small Businesses.



She believes that following your passion and building a business doing what you love is the key to a happy and fulfilled life. Through Holly & Co, a creative content company, Holly is working to positively influence this creative movement by redefining what it means to be a 'small business', encouraging more women to start their own businesses, as well as empowering our young with the skills to thrive in the new working world they are entering. Bringing colour and creativity to the business world, Holly seeks to advise and inspire anyone who is dreaming of starting or already on the business journey through her podcast 'Conversations of Inspiration', events, a physical shop, and now, Do What You Love, Love What You Do, a Sunday Times Bestseller business book.

Samantha Trinder:

Co-founder of the Bingham Riverhouse Hotel.



Sama is a yoga/meditation teacher, therapist and the founder of bhuti, an eco wellbeing escape + members club in Richmond, London. 'bhuti' was founded in 2016 to offer a place to find your 'inner bhuti' through connection: with others, with yourself and through yoga/fitness, therapies, courses and a plant based cafe. Sama has been practicing yoga for almost 20 years and learnt meditation in 2008. Being a mum of two she juggled a career in hospitality, creating and operating a boutique hotel, Bingham Riverhouse in London for many years. Located on the idyllic Richmond Riverside, Bingham Riverhouse features a stunning venue for weddings & civil ceremonies along with 15 luxurious bedrooms, members club and an acclaimed restaurant by MasterChef: The Professionals winner Steven Edwards.

At the end of 2020 Sama launched the members club at Bingham Riverhouse to offer a second home for people to socialise, work and evolve. The concept of the club was inspired by the changing needs of the community during the pandemic, with hybrid working environments as the new normal, and a desire for more balance. The membership offers inspiring workspace, exciting monthly events and opportunity to connect both socially and professionally.

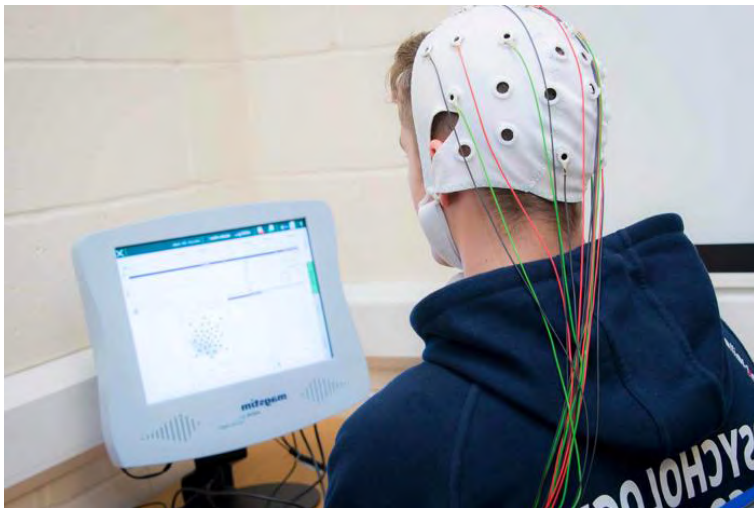
RHACC
Richmond and Hillcroft
Adult Community College

St Mary's University

Majority of Research from St Mary's Rated World Leading or Internationally Excellent

The 2021 Research Excellence Framework (REF) results published today show that the majority of research submitted by St Mary's is 4* *World Leading* or 3* *Internationally Excellent* in its originality, significance, and rigour.

St Mary's has more than doubled its research rated by the REF in the top two three- and four-star classifications as compared to the previous research exercise in 2014. St Mary's also increased the number of eligible staff who submitted research in the REF by almost 30%. In most submitted units, St Mary's research environment shifted from having *International Recognition* in 2014 to being considered as *Internationally Excellent*, with some areas also recognised as *World-Leading*.



The REF is the UK's system for assessing the quality of research in UK higher education institutions. It judges higher education institutions based on the quality of their research output, impact, and academic environment. Ratings are from 4* (*World Leading*) to 0* (*Unclassified*). The 2021 edition of the REF evaluated St Mary's research across four academic groupings:

- Theology and Religious Studies
- Sport and Exercise Sciences, Leisure, and Tourism
- English Language and Literature
- Social Work and Social Policy

87% of Research in Sport and Exercise Sciences, Leisure, and Tourism at St Mary's was rated as *World Leading* or *Internationally Excellent*, with 100% of impact case studies rated in the top two categories. The assessment of the research environment in this unit was found to be 75% in the *Internationally Excellent* rating.

World Leading outputs in Theology and Religious Studies were found to have more than trebled from 2014 with 28.6% rated at this level in 2021. The impact of 75% of research in this area was also rated in the top two categories. The English Language and Literature research unit, which also included submissions from History and Communications, saw a 50% increase on its ratings from 2014, with all outputs *Internationally Recognised* and 71% of research rated *World Leading* or *Internationally Excellent*.

In the new Social Work and Social Policy category, St Mary's made an interdisciplinary submission with research from academics in Law, Criminology, Education, Psychology and Business. 100% of research in this category achieved *International Recognition* for its impact and 50% of outputs being rated as *World Leading* or *Internationally Excellent*.

Speaking of the findings, St Mary's Vice-Chancellor, Anthony McClaran said, "I am delighted with the findings of the 2021 edition of the Research Excellence Framework. Our research teams work tirelessly to push the bounds of knowledge and best practice within an interdisciplinary research culture. These findings are a strong endorsement of all they are doing to contribute to the common good locally, nationally, and globally.

"We are proud of the world leading researchers based here at St Mary's, who work on projects as diverse as studying how [blood flow restriction training](#) can help elite athletes and clinical populations rehabilitate from injury, to helping law enforcement agencies identify and [support victims of Human Trafficking](#), or working with national regulators to find innovative new solutions to tackle [mental health issues at universities amongst first generation students](#). I look forward to seeing our research culture continue developing in the years to come."

St Mary's Provost, Professor Symeon Dagkas, added, "These results are testament to the amazing work of our academic teams at St Mary's and recognises the strong research ethos of St Mary's, which we will continue to build upon and evolve our research culture. These excellent results will attract staff and students interested in pursuing their research with us here at St Mary's."



St Mary's
University
Twickenham
London

New sports hall for The Richmond upon Thames School

Richmond upon Thames & Wandsworth Council have appointed ECE Architecture to deliver a new sports hall for [Richmond upon Thames School](https://www.richmonduponthamesschool.org.uk/), also designed by ECE.

The sports hall is located at first floor level, with studio and changing facilities on the ground floor, due to site constraints.

The site is located in Twickenham in close proximity Twickenham Stadium, the home of English Rugby & the RFU, and Twickenham Stoop, the home of London Harlequins.

An energy hierarchy of Lean, Clean and Green has been followed to reduce operational energy use and carbon emissions with passive design prioritised.

The roof will feature PV panels to provide a renewable energy source and a sedum green roof to encourage biodiversity at the site.

<https://www.richmonduponthamesschool.org.uk/>



The Richmond upon Thames School
Excellence Through Endeavour



THE ROYAL BALLET SCHOOL ANNOUNCES NEW ON-DEMAND PROGRAMME FOR PRIMARY SCHOOLS

The School has long held the ambition to expand the reach of the Primary Steps programme beyond the current five centres and 28 partner schools. They have extensively developed their digital capability over the past 12 months in order to increase their reach, both within the UK and globally, and are delighted that this means they can offer even more opportunities for young students to access high-quality dance education.

The new programme takes a creative approach to teaching ballet, with a strong emphasis on developing students' creativity and independent thinking skills. Designed to be accessible to all, including those with Special Educational Needs or physical disabilities, the programme is gender-neutral and uses inclusive language, with content adaptable to the students' needs. Completely flexible, the programme is delivered via The Royal Ballet School's Video On Demand platform, so educators can choose when, where and how to use the content, without the need to commit to pre-scheduled classes. All materials will be developed and delivered by The Royal Ballet School team, bringing their wealth of knowledge, expertise and experience to guarantee a programme of exceptional quality.



Schools who sign up for the programme will have access to libraries of classes on cross-curricular themes and exploring core concepts of movement in ballet; movement guides (warm-ups and cool-downs); accompanying class plans and resources for pupils; and inspiration footage both of Royal Ballet School dancers and Primary Steps students. Teachers will be provided with notes, tutorials and advice to accompany the classes, and will also have the opportunity to join CPD webinars and live virtual workshops. Schools will receive ongoing support directly from The Royal Ballet School as they need it.

Schools may sign up for a 12-month programme, with content live from July 1 to June 30 each year. The programme is suitable for seven to 11-year olds, with two levels of content available. A three-tier pricing system is available for different-sized schools, starting at £500 per year for up to 150 children.

The Royal Ballet School is deeply passionate about and committed to widening access to ballet education. The School believes that the teaching of creative dance is a vital part of holistic education with an abundance of benefits for young people. Children that have access to dance training have the opportunity to learn through movement, develop creative and critical thinking and social skills, and enjoy enhanced mental and physical health and wellbeing. They are also given an introduction into the world of dance creation and performance, connecting participants with local dance infrastructure and opening up possibilities for future involvement in the arts.

Funded by the Department for Education and other generous supporters, the in-person Primary Steps programme gives access to creative ballet education to thousands of children, targeting areas of social, economic and cultural diversity. In each area, the School works with a national dance agency, a host secondary school and a cluster of primary and junior schools, with weekly classes co-led by a classical ballet specialist and a creative dance specialist and accompanied by a professional musician.

Primary Steps on Demand makes high-quality creative ballet education from The Royal Ballet School available to all primary school-aged children across the UK. The programme has its roots in the School's in-person Primary Steps programme, which has been delivering an introduction to creative ballet training to primary school children in England since 2005. Registration for the programme is now open.

See our Primary Steps programme in action video [HERE](#)



Dementia Action Week 2022: the importance of diagnosis

If you or someone you are close to is experiencing potential symptoms of dementia, you are encouraged to act on it and seek guidance this Dementia Action Week (16 to 22 May).

Dementia Action Week is the Alzheimer's Society's annual awareness campaign. This year's theme is 'diagnosis'. With diagnosis rates falling to a five-year low, the Alzheimer's Society want to encourage those who might be living with undiagnosed dementia to seek guidance and support. Common dementia symptoms include memory loss, confusion, personality changes, and changes in behaviour.

One of the biggest barriers to seeking a dementia diagnosis is a misconception around memory loss being a sign of normal ageing. However, memory loss could in fact be a sign of something more serious and although getting a diagnosis can be daunting, research from the Alzheimer's Society shows that 91% of people affected by dementia believe it is better to know.

There is plenty of information on the Alzheimer's Society's website about the [symptoms and diagnosis of dementia](#).

If you would like to speak to someone, you can contact the Dementia Connect Support line number on 0333 1503456 or email any questions to the Richmond Alzheimer's Society on richmondservices@alzheimers.org.uk.

A reminder that Age UK Richmond is hosting a [Dementia Information Day on Saturday 21 May](#).



Moves to legalise e-scooters could spark rise in house fires

- Zurich UK urges consumers to be safety aware when charging e-scooters after lithium battery fires treble
- The Transport Bill announced today could see e-scooters legalised on public roads
- London Fire Brigade figures reveal a 164% jump in e-scooter blazes last year
- Zurich has seen five-figure claims for lithium battery fires including £83,000 for an e-bike and £60,000 for a cordless vacuum

Moves to legalise e-scooters on Britain's roads could lead to a rise in house fires caused by exploding lithium batteries, experts have warned.

The Transport Bill announced today "includes measures relating to private e-scooters", which could see them legalised on the UK's roads.

The announcement has prompted warnings from Zurich for consumers to take care when buying and charging the devices following a spate of residential fires linked to lithium batteries. Zurich called for more to be done to raise awareness of the risks.

Figures obtained by Zurich from the London Fire Brigade reveal firefighters were called to 74 e-scooter and e-bike blazes in the capital last year, up from 28 in 2020 – a jump of 164%. London fire crews have already attended 30 blazes involving the vehicles this year.

Source	2020	2021	2022
e-bike	12	44	24
e-scooter	16	30	6
Other Lithium Battery	27	35	10
Grand Total	55	109	40

Zurich has seen claims for lithium battery blazes triple over three years, with most caused by defective batteries, incorrect chargers and items being left on charge for too long. Third-party batteries which can be bought cheaply on the internet – and don't always meet safety standards – are also to blame.

Recent claims include an £83,000 pay out after an e-bike went up in flames in a garage and another that exploded in a customer's bedroom, causing £14,000 of damage.

The London Fire Brigade has already issued several warnings over the leap in e-scooter fires while Transport for London has banned them on its network.

Zurich's Head of Property Claims, Alastair Thomson, said: "With e-scooter numbers growing rapidly, we need to consider consumer safety at home, as well as on the road. "Lithium battery blazes are already on the rise and it's vital that people are aware of how they can safely store and charge the devices.

“Last year we saw multiple five-figure claims from battery blazes that left people’s homes damaged and possessions ruined. Lithium battery fires could become more frequent unless we do more to increase public awareness of the risks.

“We strongly urge people to buy accessories from reputable companies, follow manufacturer’s instructions on charging and avoid leaving batteries on charge when they leave the house.”

London Fire Brigade’s Assistant Commissioner for Fire Safety, Paul Jennings, said: *“We have seen a rise in the number of fires involving e-bikes and e-scooters and it’s vital people are aware of the risks.*

“These items are often stored and charged in escape routes in homes or communal areas so when a fire does occur, escape routes are blocked which immediately makes an already serious situation much more frightening.

“We know lithium-ion batteries are susceptible to failure if incorrect chargers are used. Many of these incidents involve batteries which have been sourced on the internet, which may not meet the correct safety standards.”

Louise Russell, a partner at Burgoynes, a leading firm of forensic investigators, said: *“Whilst lithium ion batteries are generally safe, if they sustain a fault the result can be catastrophic. To reduce the risk users should make sure they buy lithium ion batteries from reputable manufacturers, charge them with the correct adapter and in accordance with manufacturers’ instructions and stop using them if they are damaged, wetted or are swollen.*

“Burgoynes have investigated many fires started by lithium ion batteries and we are seeing an increase in the frequency of such incidents. In some cases people have become trapped in their properties due to the location chosen for charging batteries. Given the potential for a sudden and rapidly developing fire from batteries, it is advisable to consider escape routes from buildings and not to charge batteries at the bottom of staircases or close to final exit doors.”

Last year, Zurich recorded several blazes caused by lithium batteries contained in household devices, including laptops, vapes and e-scooters.

These include a £60,000 claim involving a cordless vacuum cleaner that burst into flames and a £9,000 fire sparked by a remote-control aircraft which burned down a shed.

London fire crews have put out 40 lithium battery fires this year. In 2021, they dealt with 109 fires – double the 55 seen in 2020.

Thomson added: *“From laptops to mobile phones, lithium batteries are now so common in our homes it’s easy to overlook the hazards they pose, if not treated properly. Although lithium battery blazes only make up a small proportion of fire claims, it’s important people remain aware of safety when charging up electronics.”*



ZURICH[®]

Thomas Frank nominated for Premier League Manager of the Season

From [Brentford FC](#)

Bees boss up for season award with Barclays

Thomas Frank is on the five-man shortlist for the Premier League's Barclays Manager of the Season.

The Bees boss is up against Pep Guardiola [Manchester City], Jürgen Klopp [Liverpool], Eddie Howe [Newcastle United], and Patrick Vieira [Crystal Palace] for the prestigious management prize.

Vote for Thomas [HERE](#)

Following promotion last May, Thomas has led us on a remarkable first season in the Premier League. Starting with our opening night victory over Arsenal, we have not been lower than 15th at any stage this campaign as we secured a second season in the top flight in midweek.

Along the way there have been home wins over Everton, Watford, Aston Villa, Burnley, West Ham United, and Southampton as well as that unforgettable 3-3 draw against Liverpool.

On the road, there were the last-minute victories over West Ham and Watford, our 4-1 win at Chelsea, the biggest win by a newly-promoted side over a team starting the day in the top three, and further successes against Wolverhampton Wanderers and Norwich City.

With two games of the season to play we are guaranteed our best-ever league position since 1938 and our fourth-highest finish of all time. We also remain in with a chance of securing the highest finish in the top flight by a Play-Off winner since Ipswich in 2001.

This nomination is the latest in a string of accolades for Thomas this season which have included two LMA Performance of the Weeks, a nomination for April's Barclays Manager of the Month, and a nomination for the Danish Coach of the Year.



England to Host Rugby World Cup 2025

- Ambition to be best attended Women's Rugby World Cup, hosting nationwide pool games and selling out the final at Twickenham to set a benchmark for future world cups while growing the women's domestic and global game
- Grassroots legacy to modernise facilities in hundreds of clubs, attract 500 new female coaches, 1,000 new match officials and introduce thousands more girls and young women to the game
- Tournament will boost UK economy by over £156m

The Rugby Football Union (RFU), England's governing body for rugby union, is delighted that England has been named by World Rugby as the host location for the Rugby World Cup (RWC) in 2025.

Since England last hosted the RWC in 2010 and won it in 2014, women's rugby has grown exponentially with World Rugby stating the women's game is the single biggest opportunity to grow the sport globally. England's 15-a-side team is now the No 1 ranked team in the world, having recently won its fourth consecutive Six Nations title.

Female participation in England has grown from 13,000 to 40,000 registered players in clubs, with a growing pipeline of girls playing in schools, colleges and universities.

For Rugby World Cup 2025, the RFU and host partners World Rugby, plan to adopt a multi-city and multi-region approach to delivering the tournament. This will be the first time that the tournament will be made up of 16 teams and the hosting model will facilitate great opportunities for people living in different parts of the country to attend, promoting rugby and enhancing participation in the sport nationwide.

A central theme to the hosting plans will be to deliver a legacy programme in parallel to the tournament from 2022 to 2025 for growing the women's game across the country. The legacy programme will focus on three key strands: creating capacity through facility development and the recruitment of female coaches and referees, creating a multigenerational legacy through a call to arms for more young girls and university women to play, and for women who didn't have the opportunity to play to become fans, and to support development within the home unions.

The legacy programme will see facilities standards improved to enhance the experiences women and girls have in hundreds of clubs. Through investment, the programme will modernise toilet facilities, upgrade changing rooms and develop social spaces in clubs across the country.

Grassroots education and mentor programmes will aim to attract 1,000 new female coaches and 500 match officials while also introducing thousands more girls and young women to the game.

Sue Day, RFU Chief Operating Officer and Chief Finance Officer and former England Women's Captain who represented England at three Rugby World Cups and won three grand slams said: *"We are thrilled to be hosting Rugby World Cup 2025, it is going to be incredible. We would like to thank Government for their support in making this possible. Working closely with Government, UK Sport, Sport England and World Rugby together we will create a lasting legacy for women's rugby in England, the UK and across the world, both in terms of attracting more people to play and attracting new fans.*

"As we have seen from other home World Cups in cricket, hockey and netball a Rugby World Cup will further advance all women's sport. The tournament will also deliver significant economic benefits right across the country. I can only imagine how proud we will be and how special it will feel to host the final at

Twickenham.”

Culture Secretary Nadine Dorries said: *“We want to use the 2025 World Cup as a catalyst to inspire more women and girls to get active and enjoy the benefits of competitive sport.*

“We’ve a great platform to do so. The Red Roses are top of the world rankings and grassroots participation is booming. We’re investing £30 million in a major sporting events package over the next three years to help us achieve our aim.”

Sports Minister Nigel Huddleston said: *“This is a fantastic vote of confidence for women’s rugby union in this country.*

“We will work closely with the RFU to use the power of staging a World Cup to invest in growing the sport, improving grassroots facilities, narrowing the gap between male and female interest and participation, and delivering a new pipeline of future talent right across the UK.”

Sally Munday, CEO at UK Sport, said: *“Today marks a truly great day for rugby union and for women’s sport in the UK. By the time the Rugby World Cup begins in 2025, it will have been 15 years since England last acted as host and major events such as these are integral to us achieving the ambitions of our ten-year strategic plan.*

“We want the UK to host a programme of inspirational major sporting events that will excite new audiences. We want to reach towns and cities across the UK and grow a more diverse and sustainable fanbase for the future of sport. We are therefore truly excited about what is to come as we build towards the Rugby World Cup in 2025.

“We are extremely grateful to Government for their investment into this event. With their support, the UK has built a global reputation as a first-class destination for the biggest sporting occasions and we look forward to demonstrating that over the next decade.”

Through partnerships with universities, the legacy programme will recruit and retain players and create club leaders of the future with activities including the staging of a Festival of Rugby event.

With the aim of attracting more fans of women’s rugby in the build up to 2025, renewed effort will be put on marketing and encouraging fan attendance at Allianz Premier 15s matches and clubhouses will be opened up to host events to encourage women who have never played or watched rugby to see rugby clubs as a place they would like to visit.

The RFU is also committed to growing the English game, leading into 2025 through its focus on implementing an [‘Every Rose Action Plan’](#).

A study by Sheffield Hallam University’s Sport Industry Research Centre (SIRC) demonstrated hosting the RWC in 2025 would be of benefit to the local economies of host venues around the country through job creation and international tourism and the RWC could boost the economy in England by £64m.

The legacy programme will generate an estimated £92m of socioeconomic benefits. The values attributed to the legacy programme are based on increasing female participation in rugby and volunteering in the sport, combined with evidence on the contribution of community sport and physical activity in England to the five outcomes identified in the UK Government strategy for sport.



‘Now is the time for an Urgent and Emergency Care plan’, RCEM says, as 24,000 patients face 12 hour waits in A&Es

Responding to the [latest Emergency Department performance figures published by NHS England for April 2022](#), Dr Katherine Henderson, President of the Royal College of Emergency Medicine, said:

“The crisis in Urgent and Emergency Care continues to deteriorate. The data show 24,000 patients were delayed in an Emergency Department for 12-hours or more (from decision to admit to admission). This is a staggering and grim number and should seriously alarm all political and health leaders. Patients are coming to harm; now is the time for an Urgent and Emergency Care plan to tackle this crisis.

“The situation is more serious than it has ever been. Patients face long waits for an ambulance, long waits in an ambulance outside an Emergency Department, and long waits in the Emergency Department. These long waits delay care and treatment to patients who may be in a critical condition, and they prevent our highly skilled paramedics from returning to the community and responding to urgent and emergency calls.

“At the heart of the issue are reduced bed capacity in hospitals mixed with an increase in the number long-stay patients – social care patients who do not have sufficient support to return home or to the community - and widespread workforce shortages throughout the system.

“To tackle the crisis the government must publish a fully funded workforce plan that includes measures to retain existing staff, and open 10,000 more beds across the UK.”

Responding to [the government’s announcement of more funding for nursing in care homes](#), Dr Henderson continued:

“This announcement is welcome. Social Care nurses have long been undervalued and under-acknowledged. This increase in pay is a welcome step towards showing them the appreciation and gratitude they highly deserve.

“However, it is a shame to see that this increase in funding is limited to NHS-funded nursing care. The entire social care workforce deserves the same acknowledgement and reward. It is critical that during this crisis we attract and retain social care workers and value their time and effort by paying a wage that reflects the significance of their role.

“Good social care supports an efficient health service. Good social care can help prevent A&E attendances. Good social care will support patients moving in and out of hospital in a timely way. Crucially, good social care frees up space for other patients and increases flow throughout the hospital.”



UK confirms extra £1.3 billion in military support for Ukraine

- The UK has confirmed £1.3 billion new funding for military operations and aid to Ukraine, this comes on top of the UK's existing £1.5bn support to Ukraine, which included around £400 million in humanitarian aid and grants to the Ukrainian government, and unlocking over £700 million in lending from the World Bank through guarantees.
- Prime Minister will attend virtual G7 meeting to discuss support for Ukraine, including provision of defensive legal aid
- This comes on top of the £24 billion increase in defence spending announced in 2020, the biggest sustained increase in UK defence since the Cold War

The Chancellor confirms £1.3 billion to meet the ongoing costs of military support to Ukraine during this financial year.

This is the highest rate of UK military spending on a conflict, since the height of the campaigns in Iraq and Afghanistan when 43,000 UK troops were deployed, and the sum spent supporting Ukraine continues to rise as the conflict endures.

The announcement comes as the Prime Minister and other G7 leaders meet virtually with President Zelenskyy today [Sunday], to mark VE day and discuss support for Ukraine's long-term future as a sovereign and democratic country, including defensive lethal aid.

On Tuesday, the Prime Minister announced £300 million for electronic warfare equipment, a counter battery radar system, GPS jamming equipment and thousands of night vision devices – this will be funded from the £1.3bn increase.

This announcement will also help support the thriving defence industry in the UK. The Prime Minister and Defence Secretary will host a meeting of leading defence companies later this month to discuss ramping up production in response to increased demand created by the conflict in Ukraine and a global shift away from Russian-made weaponry.

Prime Minister Boris Johnson said: *“Putin’s brutal attack is not only causing untold devastation in Ukraine – it is also threatening peace and security across Europe. The UK was the first country to recognise the scale of the threat and send arms to help the Ukrainians defend themselves. We will stand by that endeavour, working with our allies to ensure Ukraine can continue to push back the Russian invasion and survive as a free and democratic country. In the process, we are bolstering our own security and economy, turbocharging the development and production of cutting-edge defence equipment here in the UK.”*

Chancellor Rishi Sunak said: *“The situation in Ukraine continues to cause immense suffering with every day bringing new, tragic stories of Putin’s brutality. We are unwavering in our support for the people of Ukraine – and this extra £1.3 billion will ensure we continue to provide the necessary military and operational support they need to defend themselves against Putin. The UK is at the forefront providing economic, humanitarian and defensive support to Ukraine and we are working tirelessly to bring an end to this conflict.”*

The additional £1.3 billion comes from the Reserve - funds the UK Government has set aside for the most pressing emergencies. This latest commitment, announced by the Chancellor Rishi Sunak today, is in addition to the UK's current package that totals well over £1.5 billion. The support already provided includes around £400 million in humanitarian aid and grants and unlocking over £700m in additional World Bank lending through loan guarantees.

The UK government is also supporting Ukrainian refugees fleeing the crisis through the Homes for Ukraine and Ukraine Family Scheme. So far more than 86,000 people have been given visas through the scheme, and more than 27,000 have already arrived in the UK.

The Integrated Review of Foreign and Defence policy resulted in the largest boost to defence in a generation, with an additional £24 billion allocated over four years to allow our armed forces to undertake a modernisation programme to reflect a rapidly changing world with emerging threats.



HM Treasury

World leaders urged to make firm commitments at Second Global COVID-19 Summit by ACT-Accelerator agency leads

This week, world leaders will gather to consider crucial next steps in the global COVID-19 response. We applaud the co-hosts of the Second Global COVID-19 Summit – the United States, Belize, Germany, Indonesia and Senegal – for bringing together governments from across the globe to make concrete commitments to vaccinate the world, save lives now and build better health security.

Recent WHO estimates show the death toll associated with COVID-19 in 2020 and 2021 was just under 15 million, a sobering reminder of the human cost of this pandemic. With reported cases falling globally, it is tempting – but misguided – to think the crisis is over. This is the moment to intensify efforts, not to ease off. This summit gives leaders the opportunity to write the closing chapters of the pandemic – an opportunity they cannot afford to miss.

It is imperative that leaders seize this opportunity to mobilize the funding and political will required to achieve global targets for COVID-19 vaccination coverage, testing rates and access to treatments, including oral antivirals and oxygen. Achieving these targets is essential to ending the pandemic, by reducing transmission and protecting everyone from the harms of COVID-19.

A decisive global response will mitigate the economic fallout of COVID-19, including the supply disruptions that are contributing to inflation and slow growth in many parts of the world. Definitively ending COVID-19 will also enable the world to better focus on reversing the lost progress against other diseases and getting routine immunization back on track, especially critical for children's survival and development.

However, the current context for ending the pandemic is making this work harder. Testing rates around the globe are plummeting, which means we cannot track the trajectory of this evolving virus, with low-income countries testing at an average of just 5 tests per day per 100,000 people – far from the goal of 100 per day.

Despite the significant progress made increasing coverage rates in lower-income countries, millions are still unvaccinated and exposed, with just over 15% of people in low-income countries having received a vaccine. Supporting country targets in light of the WHO goal of 70% coverage – especially prioritizing full coverage of at-risk groups – remains the best way to save lives, protect health systems and minimize cases of Long COVID. Access to effective new antivirals is limited by constrained supply and low testing rates, while medical oxygen and PPE shortages are still impacting many countries.

The ACT-Accelerator published a strategic plan and budget in October 2021 to address these inequities. We have made concrete progress on all fronts – but the partnership still faces a huge financing gap. We, the leaders of the ACT-Accelerator's constituent agencies, are concerned that 6 months into our new budget cycle, just over 10% of our financing needs have been met.

Three months ago, we launched our financing framework with ‘fair share’ asks of the world’s richest countries, calculated based on the size of their national economies and what they would gain from a faster recovery of the global economy and trade. As of today, 6 countries have led the way in pledging at least 25% of their fair share – but we need more.

With the world’s attention drawn to other urgent crises, billions of people continue to suffer from a lack of equitable access to COVID-19 tools – taken for granted in many countries – due to a lack of funds and political will. Countries are juggling multiple competing health, economic, and social priorities, but they will drop all of these balls if the pandemic is prolonged and allowed to flare up again. A lack of funding for the rollout of vaccines and treatments is curtailing ambitions, precluding the population-wide vaccination campaigns and intensive outreach needed.

The BA.4 and BA.5 Omicron sub-variants driving up deaths and hospitalizations in places with high immunity is a warning that the global response needs to get ahead of future Variants of Concern. We must invest in research and development to update our tools, rolling out vaccines, tests and treatments to reduce and monitor transmission, while mitigating the impact of the pandemic and protecting essential services. Such actions should underpin an endgame strategy for the pandemic.

The actions set out by the Summit co-hosts will go a long way to addressing the financing and policy gaps that are currently holding back the COVID-19 response. Ending the pandemic in 2022 requires global leadership. Collectively, richer countries must fully fund the ACT-Accelerator’s US\$15 billion financing gap, while all countries must commit to national policies and strategies that optimize our ability to control the pandemic, both nationally and globally. The pandemic will not end until access to vaccines, tests, treatments and PPE is achieved for everyone, everywhere.

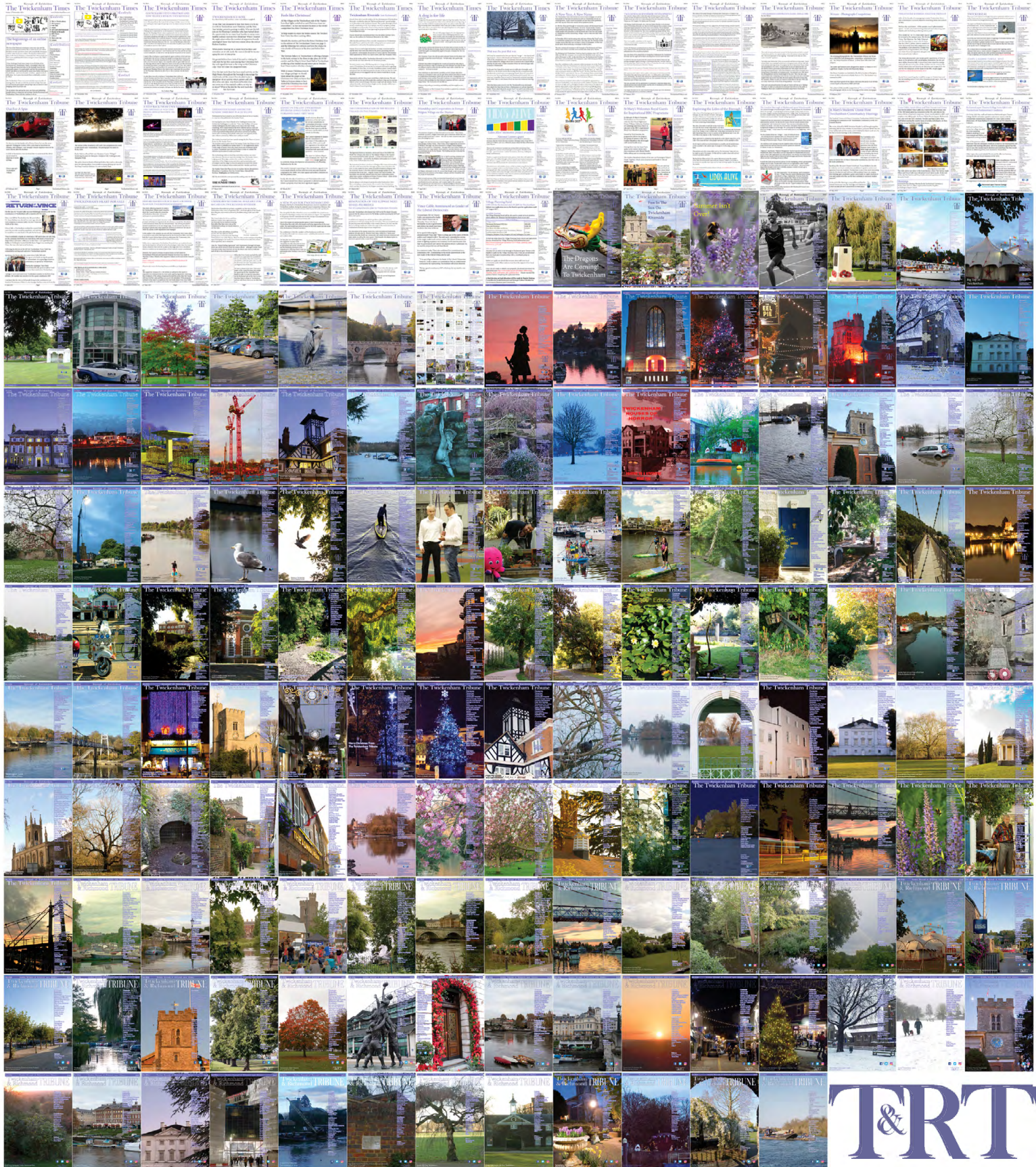
We cannot afford to delay anymore. Lives, economies and global health security depend on the outcome of this Summit.

This week, we urge world leaders, the private sector, philanthropists, civil society and other stakeholders to make the firm, substantive commitments needed to save lives, turn the tide and secure the future for all.

- *Dr Tedros Adhanom Ghebreyesus – Director-General, the World Health Organization*
- *Dr Seth Berkley – CEO, Gavi, the Vaccine Alliance*
- *Dr Philippe Duneton – Executive Director, Unitaïd*
- *Dr Chris Elias – President, Global Development Division, Bill & Melinda Gates Foundation*
- *Sir Jeremy Farrar – Director, Wellcome*
- *Dr Richard Hatchett – CEO, CEPI*
- *Dr Bill Rodriguez – CEO, FIND*
- *Catherine Russell – Executive Director, UNICEF*
- *Peter Sands - Executive Director, the Global Fund to Fight AIDS, Tuberculosis and Malaria*



288 editions of the **Twickenham & Richmond Tribune** online - Lots to read: News, Reviews, History, Sports and On-going Sagas in the Borough of Richmond upon Thames



Half Page

Quarter Page
Landscape

Quarter Page Portrait

Eighth Page

Eighth Page
Landscape

Example advert sizes shown above

Thousands read The Twickenham & Richmond Tribune

If you are reading this you could be advertising your business with
The Twickenham & Richmond Tribune. Community rates are
available

Contact: advertise@TwickenhamTribune.com

View ad details at www.TwickenhamTribune.com/advertise

Contact

contact@TwickenhamTribune.com
letters@TwickenhamTribune.com
advertise@TwickenhamTribune.com



Published by:

Twickenham & Richmond Tribune (in association with World InfoZone Limited)

Registered in England & Wales

Reg No 10549345

The Twickenham Tribune is registered with the ICO under the Data Protection Act, Reg No ZA224725

©Twickenham & Richmond Tribune. All rights reserved. No part of this publication may be used or reproduced without the permission of Twickenham & Richmond Tribune. While we take reasonable efforts, this online newspaper cannot be held responsible for the accuracy or reliability of information. The views and opinions in these pages do not necessarily represent those of The Twickenham & Richmond Tribune.

[Terms & Conditions](#)